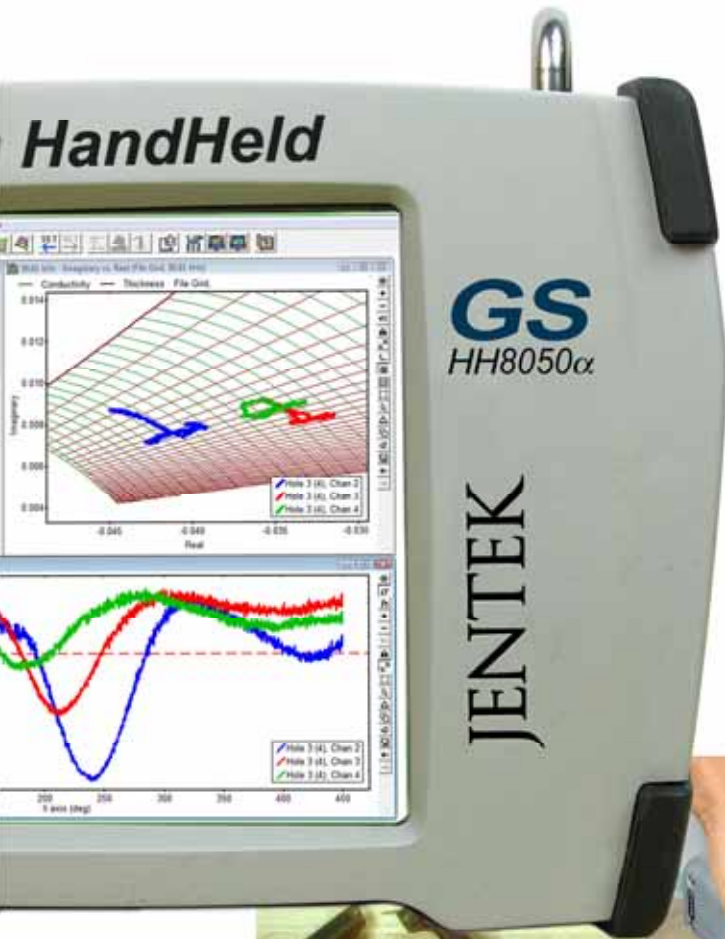


*The Leader in
Eddy Current Testing
Performance*

Bolt-Hole Inspection with MWM-Arrays



*Crack Detection in
holes with and without
installed bushings*

*“Yes, we see
through
bushings!”*



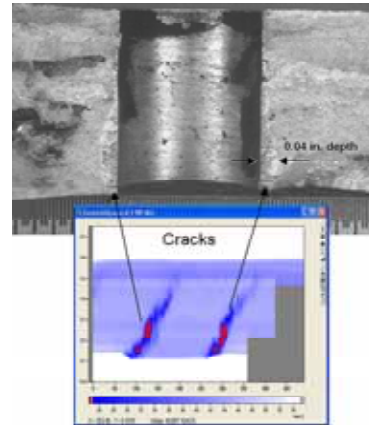
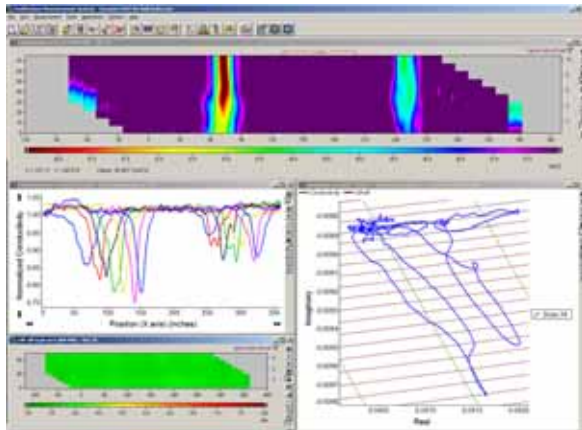
*Developer of the revolutionary
MWM-Array Eddy Current Technology*

JENTEK® Sensors

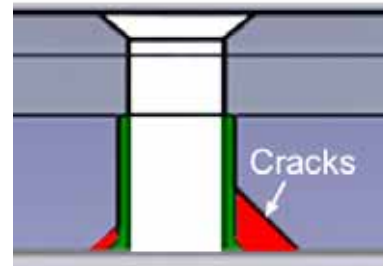
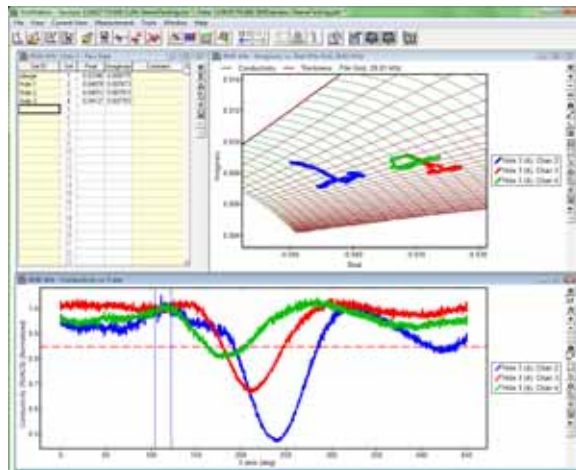
GS-HandHeld and GS-Durable with GridStation® Software and MWM-Arrays for Bolt Hole Inspection

The GS-HH8050 α supports JENTEK Sensors, Inc. GridStation® software. GridStation software uses Measurement Grids, Lattices & Hyperlattices to convert impedance measurements into electrical properties and layer thicknesses, generating images used to detect defects and assess condition. Grids, Lattices and Hyperlattices are 2, 3, and 4 or higher dimension precomputed databases, respectively, generated using physics-based models of the sensor and multilayered material under test.

C-Scan Imaging for bolt-holes without bushings



Crack Detection through bushings



JENTEK Sensors, Inc. was founded in 1992 to address the need for enhanced life management of high-value assets (pipelines, refineries, aircraft, rotorcraft, spacecraft, ships, power plants) and for quality assessment and control of high value-added processes (coating, welding, heat treatment, shot peening). The JENTEK **GS-HandHeld** application focus areas include:

Nondestructive Testing (NDT) for

- Oil & Gas Infrastructure
- Aircraft Engines and Land-based Turbines
- Composites and Metal Structures

Surface Mounted and Embedded Sensors and Sensor Networks for

- Fatigue Crack Detection and Growth Monitoring
- Stress Corrosion Crack Detection and Growth Monitoring
- Corrosion (internal and external wall loss) Detection and Monitoring
- Magnetic Torque and Stress Sensors (including non-contact torque/bending load sensing for rotating shafts)

JENTEK® Sensors, Inc.

110-1 Clematis Avenue, Waltham, MA 02453-7013
Phone: 781-642-9666 • Email: jentek@shore.net

GridStation, MWM, IDED and JENTEK Sensors are registered trademarks of JENTEK Sensors, Inc. JENTEK Issued patents include U.S. Patent #s 7,994,781, 7,876,094, 7,812,601, 7,696,748, 7,589,526, 5,533,575, 7,528,598, 7,526,964, 7,518,360, 7,467,057, 7,451,657, 7,451,639, 7,411,390, 7,385,392, 7,348,771, 7,289,913, 7,280,940, 7,230,421, 7,188,532, 7,183,764, 7,161,351, 7,161,350, 7,106,055, 7,095,224, 7,049,811, 6,995,557, 6,992,482, 6,952,095, 6,798,198, 6,784,662, 6,781,387, 6,727,691, 6,657,429, 6,486,673, 6,433,542, 6,420,867, 6,380,747, 6,377,039, 6,351,120, 6,198,279, 6,188,218, 6,144,206, 5,966,011, 5,793,206, 5,629,621, 5,990,677 and RE39,206 (other patents pending).